

"HP" SERIES HYDRAULIC LEVELER SUBMITTAL DRAWING

"HP" SERIES HYDRAULIC DOCK LEVELER MODEL SPECIFICATIONS

MODEL	LIP*	DECK*	NOMINAL LENGTH	WIDTH	HINGE CF1045	SEAMLESS HINGE TUBE	OPERATING RANGE
HP6625,30/HP7625,30	1/2" x 16"	1/4"	6'	72"/83"	1" diameter	1 5/8" dia. O.D.	+ 12" - 12"
HP6825,30/HP7825,30	1/2" x 16"	1/4"	8'	72"/83"	1" diameter	1 5/8" dia. O.D.	+ 12" - 12"
HP6635,40,45	5/8" x 16"	1/4"	6'	72"	1 1/8" diameter	2" dia. O.D.	+ 12" - 12"
HP7635,40,45	5/8" x 16"	1/4"	6'	83"	1 1/8" diameter	2" dia. O.D.	+ 12" - 12"
HP6835,40,45	5/8" x 16"	1/4"	8'	72"	1 1/8" diameter	2" dia. O.D.	+ 12" - 12"
HP7835,40,45	5/8" x 16"	1/4"	8'	83"	1 1/8" diameter	2" dia. O.D.	+ 12" - 12"
HP61025,30/HP71025,30	1/2" x 16"	1/4"	10'	72"/83"	1" diameter	1 5/8" dia. O.D.	+ 16" - 16"
HP61035,40,45	5/8" x 16"	1/4"	10'	72"	1 1/8" diameter	2" dia. O.D.	+ 16" - 16"
HP71035,40,45	5/8" x 16"	1/4"	10'	72"	1 1/8" diameter	2" dia. O.D.	+ 16" - 16"

INSERT SPECIFIC JOB REQUIREMENTS FROM CHART

--	--	--	--	--	--	--	--

STANDARD CAPACITY

A.N.S.I. CAPACITY

--	--

* Lip and deck, 55,000 lb. minimum yield steel; 5 year structural warranty.
 ** Models with deck width of 78" (6 1/2') are available upon request.

STANDARD FEATURES

- (2) Bumpers
- Lip 16"
- Grease Fittings
- Full Range Toe Guards
- Deck Support, Structural
6" x 8.2 lb./ft. C Channel
- Fully Hydraulic Actuation
- Automatic Recycle
- In-line Safety Stop
(prevents free-fall)
- Motor -- 1 hp. 1 ph. 60 Hz
 - 115 Volt
 - 230 Volt
- Lip Keeper/Night Locks
- Maintenance Strut
- Below Dock Control

OPTIONAL FEATURES

- Lip 18"
- Lip 20"
- Weather Seals
- Foam Insulation
- Abrasive Deck
- Explosion Proof
- 3 Phase Motor
 - 208 Volt
 - 230 Volt
 - 460 Volt
 - 575 Volt
- Emergency Stop
- Three Wheel Fork Lift
- Independent Lip Control
- Yellow & Black Diagonal
Safety Stripe on Toe Guards
- Laminated Bumpers
_____ size
- Pan Units
 - Four Sided Pans
 - Three Sided Pans



P.O. Box 338 • Spring Hill, Tennessee 37174
 931/486-2296 • 800/251-3382 • Fax: 931/486-0316
 www.pioneerleveler.com

NOTES

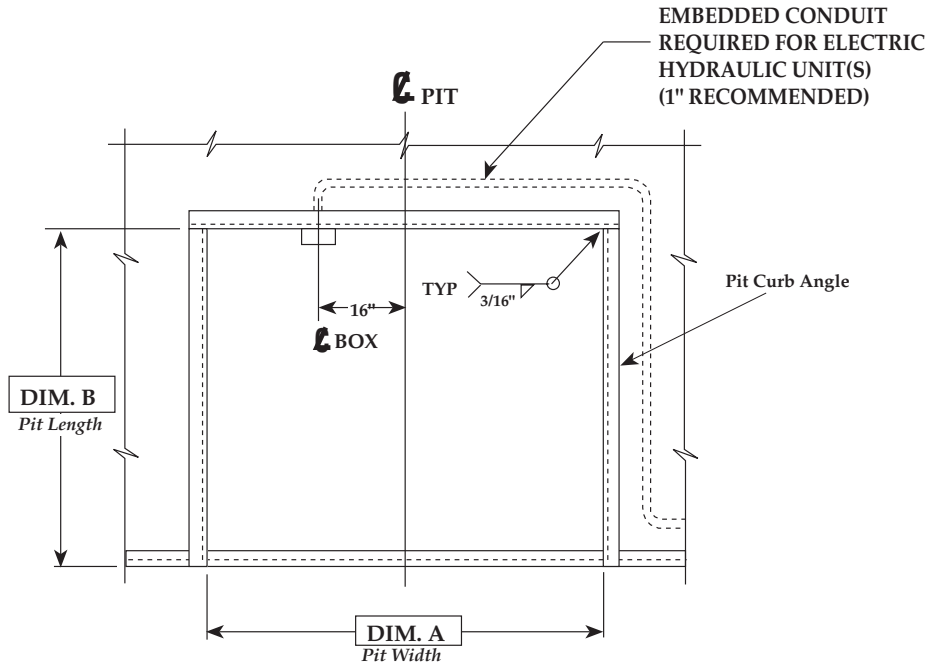
JOB

--

--

"HP" SERIES HYDRAULIC LEVELER PIT DETAIL

08/06

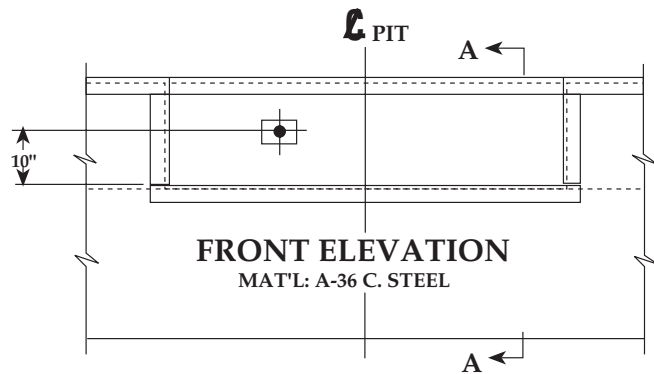


VARIABLE DIMENSIONS				
MODEL	"A"	"B"	"C"	"D"
6'W x 6'L	74"	63"	19 1/2"	20"
6'W x 8'L	74"	87"	19 1/2"	20"
6'-6"W x 6'L	80"	63"	19 1/2"	20"
6'-6"W x 8'L	80"	87"	19 1/2"	20"
7'W x 6'L	85"	63"	19 1/2"	20"
7'W x 8'L	85"	87"	19 1/2"	20"
6'W x 10'L	74"	111"	23 1/2"	24"
6'-6"W x 10'L	80"	111"	23 1/2"	24"
7'W x 10'L	85"	111"	23 1/2"	24"

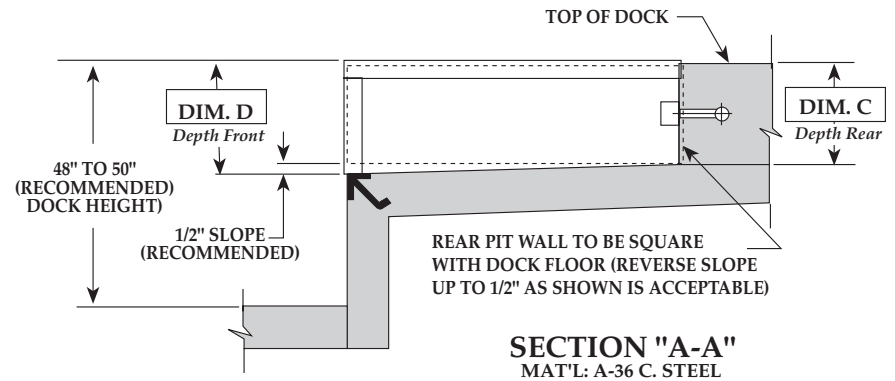
INSERT SPECIFIC JOB DIMENSIONS FROM CHART

--	--	--	--	--

PLAN
MAT'L: A-36 C. STEEL



FRONT ELEVATION
MAT'L: A-36 C. STEEL



SECTION "A-A"
MAT'L: A-36 C. STEEL

NOT TO SCALE

DRAWN:	SCALE:	DATE:	DRAWING NUMBER:
J.M.G.	AS NOTED	1/30/95	PMI-2014-R1

TOLERANCES:		
Inch Dimension =	Decimal Dimension =	Angles =
± 1/16"	± .005	1 ± °



P.O. Box 338 • Spring Hill, Tennessee 37174
931/486-2296 • 800/251-3382 • Fax: 931/486-0316
www.pioneerleveler.com

NOTES
JOB