

# "EHP" SERIES HYDRAULIC LEVELER SUBMITTAL

## "EHP" SERIES HYDRAULIC DOCK LEVELER MODEL SPECIFICATIONS

08/06

MODEL	LIP*	DECK*	NOMINAL LENGTH	WIDTH	HINGE CF1045	SEAMLESS HINGE TUBE	OPERATING RANGE
EHP6625,30/EHP7625,30	1/2" x 16"	1/4"	6'	72"/83"	1" diameter	1 5/8" dia. O.D.	+ 12" - 12"
EHP6825,30/EHP7825,30	1/2" x 16"	1/4"	8'	72"/83"	1" diameter	1 5/8" dia. O.D.	+ 12" - 12"
EHP6635,40,45	5/8" x 16"	1/4"	6'	72"	1 1/8" diameter	2" dia. O.D.	+ 12" - 12"
EHP7635,40,45	5/8" x 16"	1/4"	6'	83"	1 1/8" diameter	2" dia. O.D.	+ 12" - 12"
EHP6835,40,45	5/8" x 16"	1/4"	8'	72"	1 1/8" diameter	2" dia. O.D.	+ 12" - 12"
EHP7835,40,45	5/8" x 16"	1/4"	8'	83"	1 1/8" diameter	2" dia. O.D.	+ 12" - 12"
EHP61025,30/EHP71025,30	1/2" x 16"	1/4"	10'	72"/83"	1" diameter	1 5/8" dia. O.D.	+ 16" - 16"
EHP61035,40,45	5/8" x 16"	1/4"	10'	72"	1 1/8" diameter	2" dia. O.D.	+ 16" - 16"
EHP71035,40,45	5/8" x 16"	1/4"	10'	83"	1 1/8" diameter	2" dia. O.D.	+ 16" - 16"

### INSERT SPECIFIC JOB REQUIREMENTS FROM CHART

--	--	--	--	--	--

**STANDARD**

**A.N.S.I.**

--	--

\* Lip and deck, 55,000 lb. minimum yield steel; 2 year structural warranty.

\*\* Models with deck width of 78" (6 1/2') are available upon request.

### STANDARD FEATURES

- (2) Bumpers
- Lip 16"
- Grease Fittings
- Working Range Toe Guards
- Deck Support, Structural "C" Channel
- Fully Hydraulic Actuation
- In-line Safety Stop (prevents free-fall)
- Motor -- 1 hp. 1 ph. 60 Hz
  - 115 Volt
  - 230 Volt
- Lip Keeper/Night Locks
- Maintenance Strut

### OPTIONAL FEATURES

- Lip 18"
- Lip 20"
- Weather Seals
- Foam Insulation
- Abrasive Deck
- Explosion Proof
- 4 x 10 x 12 Laminated Bumpers
- 3 Phase Motor
  - 208 Volt
  - 230 Volt
  - 460 Volt
  - 575 Volt
- Emergency Stop
- Three Wheel Fork Lift
- Yellow & Black Diagonal Safety Stripe on Toe Guards

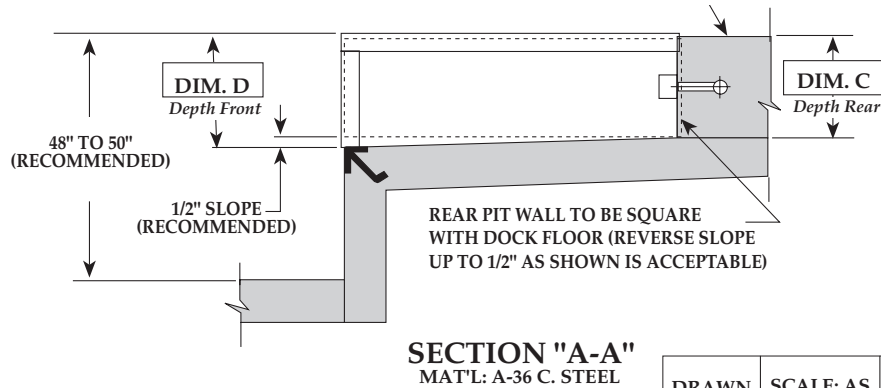
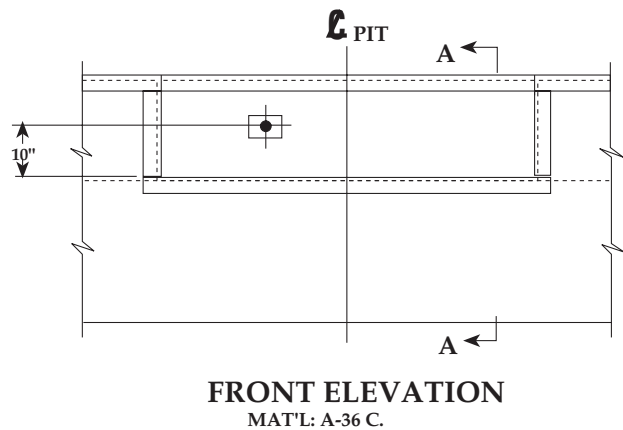
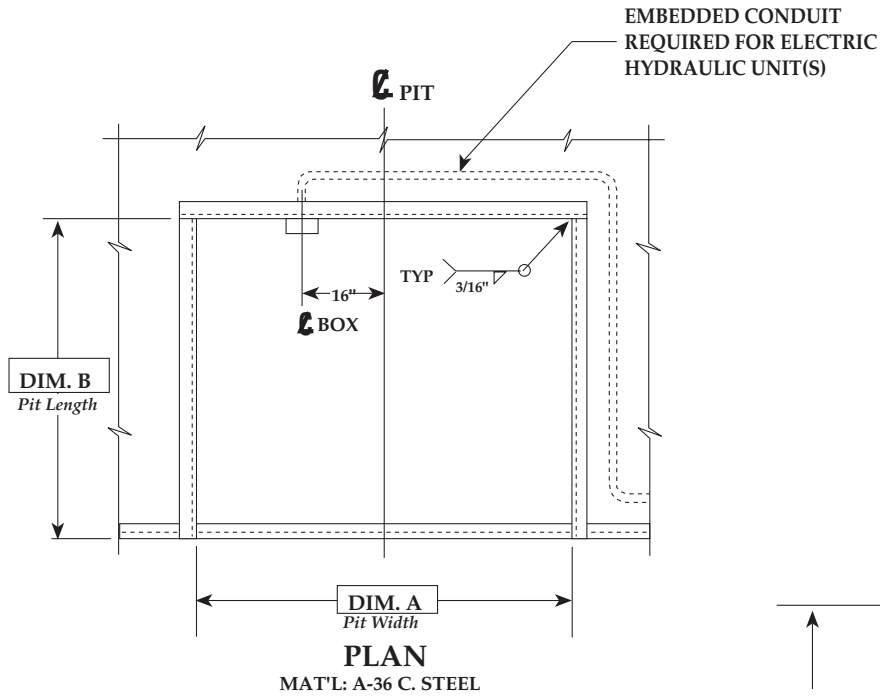


P.O. Box 338 • Spring Hill, Tennessee 37174  
 931/486-2296 • 800/251-3382 • Fax: 931/486-0316  
 www.pioneerleveler.com

**NOTES**

**JOB**

# "EHP" SERIES HYDRAULIC LEVELER PIT DETAIL



VARIABLE DIMENSIONS				
MODEL	"A"	"B"	"C"	"D"
6'W x 6'L	74"	63"	19 1/2"	20"
6'W x 8'L	74"	87"	19 1/2"	20"
6'-6"W x 6'L	80"	63"	19 1/2"	20"
6'-6"W x 8'L	80"	87"	19 1/2"	20"
7'W x 6'L	85"	63"	19 1/2"	20"
7'W x 8'L	85"	87"	19 1/2"	20"
6'W x 10'L	74"	111"	23 1/2"	24"
6'-6"W x 10'L	80"	111"	23 1/2"	24"
7'W x 10'L	85"	111"	23 1/2"	24"

INSERT SPECIFIC JOB DIMENSIONS FROM CHART

--	--	--	--	--

DRAWN :	SCALE: AS NOTED	DATE: 1/30/95	DRAWING NUMBER:
---------	-----------------	---------------	-----------------

TOLERANCES		
Inch Dimension	Decimal Dimension	Angles
=	=	= ° 1

NOTES

JOB



P.O. Box 338 • Spring Hill, Tennessee 37174  
 931/486-2296 • 800/251-3382 • Fax: 931/486-0316  
 www.pioneerleveler.com